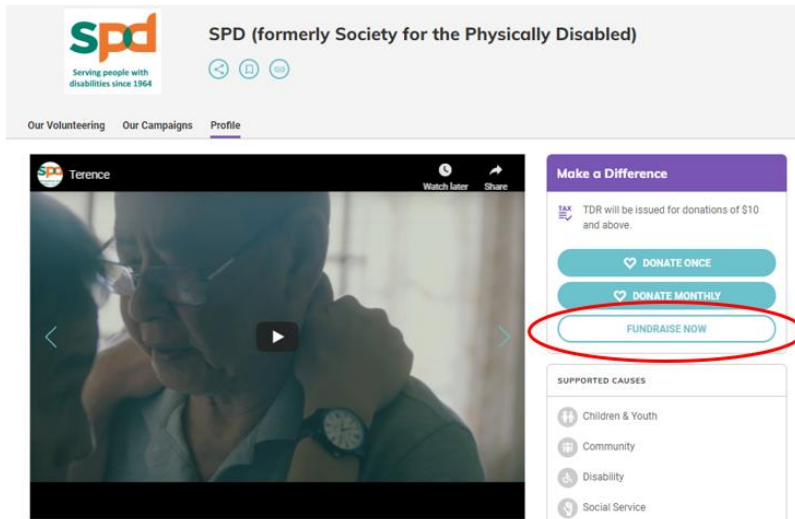


# How to set up your own online fundraising page on Giving.sg

1. Head over to <https://www.giving.sg/spd> and click "Fundraise Now"



2. Log in to your account via Facebook / E-mail. If you do not have an account on giving.sg, click "Sign up here!" and follow the instructions.

### Log In

**LOG IN WITH FACEBOOK**  
Your information is safe and secure with us.

or log in with your email

Email  
Your email address

Password ?  
Your password


[Forgot your password?](#)

**LOG IN**

Don't have an account? [Sign up here!](#)

3. Ensure that "SPD (formerly Society for the Physically Disabled)" is selected

### Start a fundraising campaign



You are starting a campaign as **Individual**

1 Enter campaign details — 2 Submit for approval

**I'm fundraising for**

SPD (formerly Society for the Physically Disabled)

#### 4. Provide more information about your campaign

You can share about your experience on interacting with a person with disabilities, your thoughts on why you support SPD or even your personal story on being a person with disabilities.

A good fundraising goal will be \$1000. You can choose to increase your target later if you like.

##### **My campaign story**

Campaign Title

Fundraising Goal

About Campaign

#### 5. Select the causes supported by this campaign

SPD is a local charity set up to help people with disabilities of all ages to maximise their potential and integrate them into mainstream society.

Through over 20 programmes that encompass early intervention, therapy, vocational training, assistive technology, day care, as well as educational, employment and social service support, we serve people with physical, sensory and learning disabilities.

Your campaign will support the following causes:

##### **Causes supported by this campaign**

Please select up to 4 causes

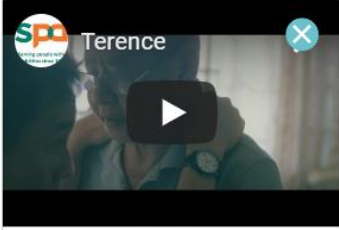



- |  |  |
|--|--|
| <input type="checkbox"/> Animal Welfare              | <input type="checkbox"/> Families                  |
| <input type="checkbox"/> Arts & Heritage             | <input type="checkbox"/> Health                    |
| <input checked="" type="checkbox"/> Children & Youth | <input type="checkbox"/> Humanitarian              |
| <input checked="" type="checkbox"/> Community        | <input checked="" type="checkbox"/> Social Service |
| <input checked="" type="checkbox"/> Disability       | <input type="checkbox"/> Sports                    |
| <input type="checkbox"/> Education                   | <input type="checkbox"/> Women & Girls             |
| <input type="checkbox"/> Elderly                     |  |
| <input type="checkbox"/> Environment                 |  |

6. Add some photos / videos for your campaigns

You can add your own photos/videos or use the existing photos/videos available

**Media gallery**

Add at least 1 image of what your campaign is about, to inspire more to donate!

 <p>SLIDE 1</p>	 <p>SLIDE 2</p>
 <p>SLIDE 3</p>	 <p>SLIDE 4</p>

7. Set your start & end date

A good duration will be 3 months. You can extend your campaign later if you like.

**Campaign duration**

Start Date

Duration

 days

End Date

8. Set the URL

Generate a default URL based on the campaign title or set your own preferred URL. Tip: A short URL will be more easily remembered

**Campaign URL**

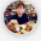
giving.sg/campaigns/

Generate Default URL

## 9. You're done!

Confirm all the details and click "Confirm Submission". SPD will review your campaign and approve it as soon as possible.

### Start a fundraising campaign



You are starting a campaign as **Individual**

1 Enter campaign details ——— 2 **Submit for approval**

---

#### One last look and we're off!

Please confirm you'd like to submit.

Once submitted, you can edit this and any other campaigns, on the "My Campaigns" page.

---

By submitting, I declare that this campaign is to raise funds for local charitable purposes only, and that I am aware of, and abide by the requirements under the Charities Act of Singapore (Chapter 37), including the Charities (Fund-raising appeals for Local & Foreign Charitable Purposes) Regulations.

Yes, I'd like to submit the campaign for

**SPD (formerly Society for the Physically Disabled)**

I'm happy for the charity to email me about my campaign.

[← BACK](#)   [SAVE DRAFT](#)   [CONFIRM SUBMISSION](#)

## 10. Spread the word

Share your campaign with your peers e.g. Facebook, Instagram, WhatsApp & Telegram. Encourage them to make a difference in the lives of people with disabilities!



[Click here to set up your campaign today!](#)

## Frequently Asked Questions

### 1. What is Giving.sg?

Giving.sg is a safe and secure integrated giving platform. It is hosted and maintained by NVPC, a charity with Institutions of a Public Character status in Singapore.

### 2. I would like to set up my own campaign, but I am not familiar with the process. Can someone set it up for me?

Yes. You can share the information with Melissa Tan at [Melissa\\_TAN@spd.org.sg](mailto:Melissa_TAN@spd.org.sg) or 6579 0794 and she will set up the campaign on your behalf. Once the page is up, she will provide you with the link and QR code for you to share with your peers.

### 3. Can individuals receive 2.5 times tax deduction if they donate via my page?

Yes, they can.

### 4. I would like to direct the donations raised from my campaign to a particular SPD program. Can I do that?

You can. Simply include this in your campaign message and write to Melissa Tan at [Melissa\\_TAN@spd.org.sg](mailto:Melissa_TAN@spd.org.sg). She will do the necessary arrangement to ensure that the donation raised from your campaign is channelled to your preferred SPD program.

### 5. Can I just donate and not set up a campaign?

Yes, definitely! You can make a donation via [https://www.giving.sg/spd/lend\\_your\\_voice](https://www.giving.sg/spd/lend_your_voice)

If you have any other questions, please contact Melissa Tan at

[Melissa\\_TAN@spd.org.sg](mailto:Melissa_TAN@spd.org.sg) or 6579 0794. Thank you! :)